



Energy for  
generations



CLASHWILLIAM  
SOLAR FARM

Issue 1 - February 2025

# Clashwilliam Solar Farm Newsletter

Clashwilliam Solar Farm is a new renewable energy project located in Co. Kilkenny. It is being developed by Harmony Solar Kilkenny Ltd (HSKL) on behalf of ESB. See [www.clashwilliamsolarfarm.ie](http://www.clashwilliamsolarfarm.ie) for details on this project.

The project has received full planning permission to generate 42MW of clean electricity that will have enough capacity to power over 10,500 homes.

As part of this project, we are committed to engaging closely with the local communities surrounding the site to ensure the successful delivery of Clashwilliam Solar Farm by July 2026.

Clashwilliam Solar Farm received full planning permission from Kilkenny County Council in June 2021 (Kilkenny County Council planning permission reference number 20/897). The grid route was granted planning permission from Kilkenny County Council in January 2023 (Kilkenny County Council planning permission reference number 22/487). The project successfully secured a capacity contract in the RESS (Renewable Electricity Support Scheme) 3 auction in September 2023.

Clashwilliam Solar Farm will connect to the electricity grid at Kilkenny 110kV (kilovolts) substation. A 5.7km (kilometres) underground cable will connect the Solar Farm to the 110kV substation. Construction of the Solar Farm will involve the installation of ground mounted solar panels on light steel frames and the installation of associated underground cabling.



Figure 1 - Site location map of Clashwilliam Solar Farm.



## Current Development

February 2025	Construction of the project is due to commence.
February 2025 to Spring 2026	Electrical works and cable installation.
Spring 2025 to Summer 2026	Solar Farm construction works.
Summer 2026	Commissioning and project operational.

## Traffic Management

### Where will the site access be?

The site will be accessed from a new site entrance constructed on the L2635 road which runs adjacent to the south of the site, approximately 800m west of where the L2635 meets the L2634 road.

The cable route will be installed along public roads c. 5.7km from the Solar Farm site to Kilkenny 110kV substation. The route will pass through the townlands of Scart, Highrath, Maddoxtown, Rathgarven, Clifden, Roughfield, Abbeygrove, Annfield Carran and Smithstown. A detailed traffic management plan will be agreed with Kilkenny County Council prior to construction.

Once constructed and operational the only traffic to occur will be for occasional maintenance visits. The impacts of such traffic will be negligible.

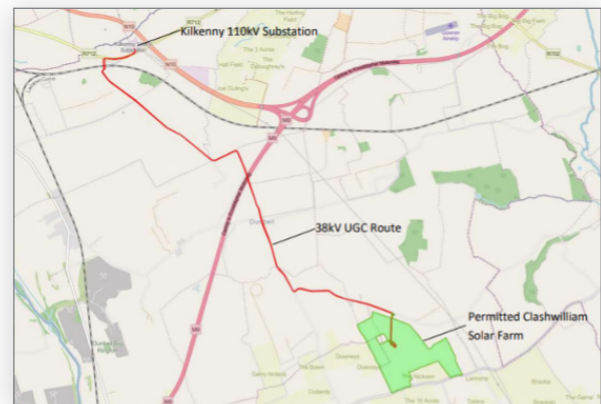
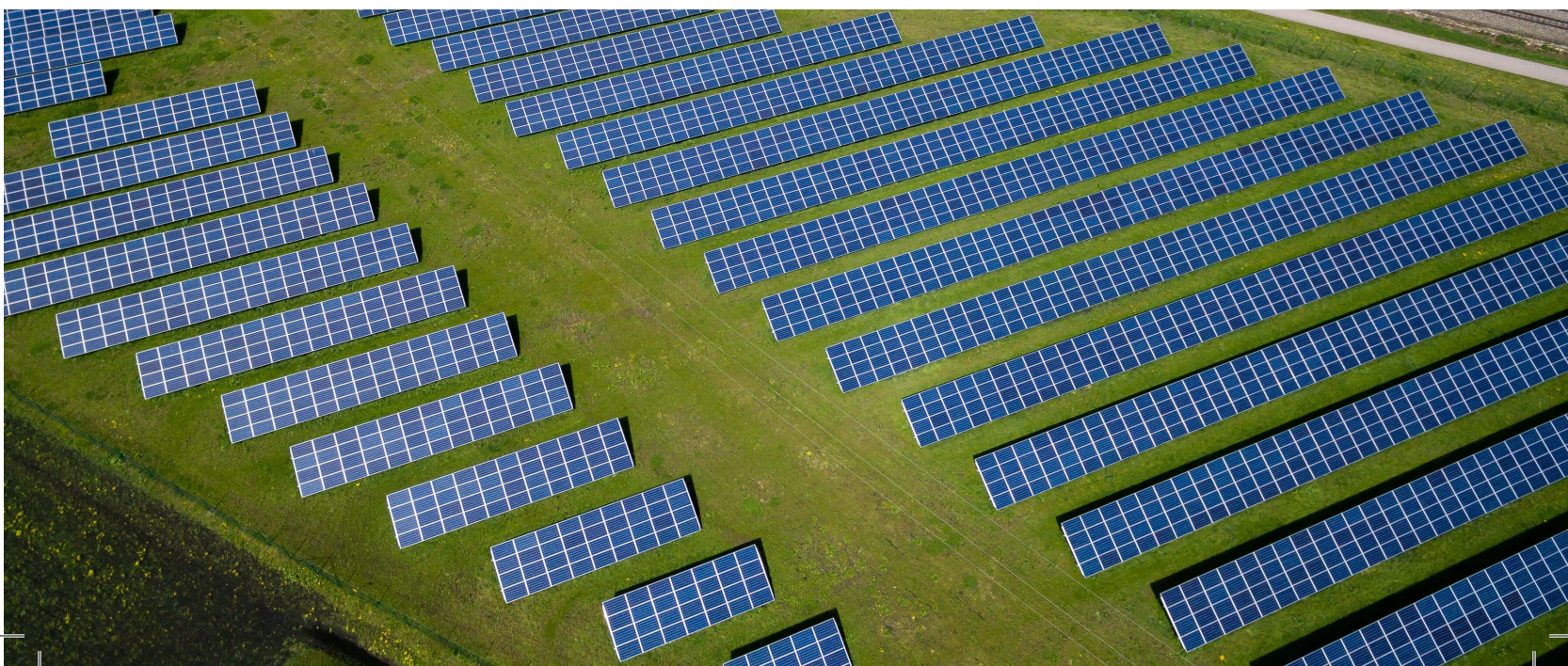


Figure 2 - Underground cable route





## Solar components for delivery?

The solar panels and ancillary components are relatively small and are transported in pallets before being assembled on site. The pallets will be delivered in 40-foot containers that are transported by articulated lorries.

## Will there be traffic diversions & delays?

Diversions and delays will be kept to a minimum when the detailed traffic management plan is put in place. The project team will arrange updates and communications on this. Your patience in this regard is much appreciated.

## Community Benefit Fund

The Clashwilliam Solar Farm project will have a Community Benefit Fund which will distribute grants to organisations in the local area once the Solar Farm is operational. The fund is to be used for the wider economic, environment, social and cultural wellbeing of the local community. ESB has an independent dedicated administrator for Wind and Solar Farm Community Funds, and they are called SECAD. This is their application portal website: [www.communitybenefitfunds.ie](http://www.communitybenefitfunds.ie) and there is a help section on the site that communities may find helpful, including links to webinars. While the solar fund is not operational yet, we encourage you to start thinking about the kind of projects you might submit and the supporting information SECAD require.



# Contact Us

The project team is committed to keeping the local community up to date with the construction of Clashwilliam Solar Farm.

Our Community Liaison Officer (CLO) Sean Moroney and members of the project team are available to meet you to discuss all aspects of the project at your convenience. We will provide regular updates through the project website as the project progresses.

**Website:** [www.clashwilliamsolarfarm.ie](http://www.clashwilliamsolarfarm.ie)  
**Email:** [ESBSolarFarms@esb.ie](mailto:ESBSolarFarms@esb.ie)  
**Phone:** 086 1677977 (CLO- Sean Moroney)  
**Post:** Clashwilliam Solar Farm Project  
ESB Head Office  
27 Fitzwilliam Street Lower  
Dublin 2  
D02 KT92  
Ireland



Energy for  
generations



CLASHWILLIAM  
SOLAR FARM